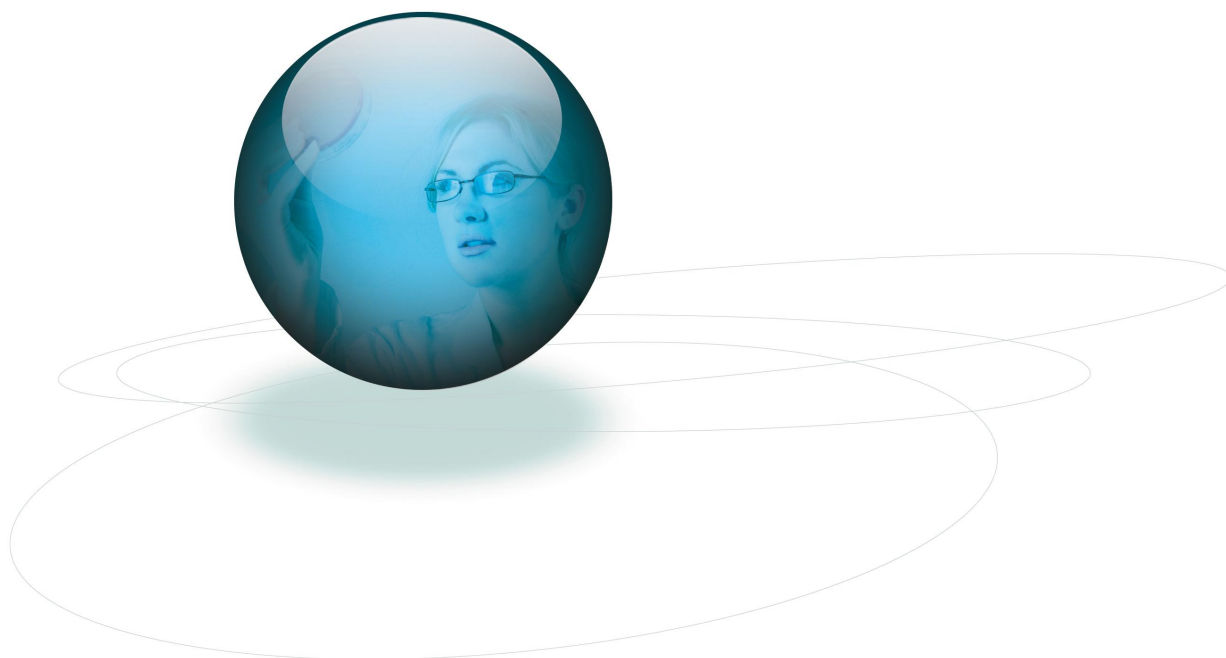


TOYTEST - Toy Safety Analytes PT Scheme TY0186 - Heshan Leo Metrology and Individual Report

Round: 55

Issue Number 1

Issued 23 September 2013



LGC Standards Proficiency Testing

1 Chamberhall Business Park, Chamberhall Green, Bury BL9 0AP, UK

Telephone: +44 (0) 161 762 2500 Fax: +44 (0) 161 762 2501

Email: customerservices@lgcpt.com Website: www.lgcpt.com



0001

Individual Report

This individual report contains a summary of all the results submitted and the performance assessments for your laboratory and your individual analysts. Please note that nominated laboratory results are represented by a blue highlight in the analyst box.

Data statistics given in the individual report are for the method you have used for each analyte. Further detail can be obtained from the main report.

Full details of the scheme, sample types, analytes and data analysis can be found in the corresponding Main Report, along with any technical comments, if applicable. The Main Report is the definitive version.

If you have any questions regarding your results which are not answered in the Main Report, please contact us using the details on the front of the report. If you would like to order any samples for re-test, please contact our customer service department or your local office.

Results Summary

Sample	Results Reported	Satisfactory Results	Questionable Results	Unsatisfactory Results	Not Assessed [^]
1 - EN71-1	158	158	0	0	0
3R - EN71-3 Real material*	17	11	0	0	6
3S - EN71-3 Standard solution	17	17	0	0	0
Round Total	192	186	0	0	6

* Analyte(s) in this round have colour coding suspended. Refer to the main report(s) for further details.

You can identify which analyte(s) apply to you on the following pages (performance scores that have no colour coding identify where suspensions have occurred.)

[^] Results which are Not Assessed should be reviewed by comparing them with the assigned value and other relevant statistics given in the main report. Participants, according to their internal quality criteria, may consider Not Assessed results to be satisfactory, questionable or unsatisfactory. Further information regarding why results may not be assessed is given in the Scheme Information section of the main report.

No unsatisfactory results in this round

No questionable results in this round

1 - EN71-1

Analyte	Test	Analyst	Method	Result	Assigned Value	No of results	Satisfactory %
4.1 Material Cleanliness	4.1	Lab Result	Assessment	Relevant	Relevant	48	97.9
4.2 Assembly	4.2	Lab Result	Assessment	Not relevant	Not relevant	47	74.5
4.3 Flexible plastic sheeting	4.3a	Lab Result	Assessment	Not relevant	Not relevant	47	97.9
4.3 Flexible plastic sheeting	4.3b	Lab Result	Assessment	Not relevant	Not relevant	47	97.9
4.4 Toy bags	4.4a	Lab Result	Assessment	Not relevant	Not relevant	47	100.0
4.4 Toy bags	4.4b	Lab Result	Assessment	Not relevant	Not relevant	47	100.0
4.5 Glass	4.5a	Lab Result	Assessment	Not relevant	Not relevant	47	100.0
4.5 Glass	4.5b	Lab Result	Assessment	Not relevant	Not relevant	47	100.0
4.5 Glass	4.5c	Lab Result	Assessment	Not relevant	Not relevant	47	100.0
4.5 Glass	4.5d	Lab Result	Assessment	Not relevant	Not relevant	47	100.0
4.6 Expanding materials	4.6	Lab Result	Assessment	Not relevant	Not relevant	47	100.0
4.7 Edges	4.7a	Lab Result	Assessment	Not relevant	Not relevant	48	87.5
4.7 Edges	4.7b	Lab Result	Assessment	Not relevant	Not relevant	48	100.0
4.7 Edges	4.7c	Lab Result	Assessment	Not relevant	Not relevant	48	72.9
4.7 Edges	4.7d	Lab Result	Assessment	Not relevant	Not relevant	48	100.0
4.8 Points and wires	4.8a	Lab Result	Assessment	Relevant	Relevant	48	66.7
4.8 Points and wires	4.8b	Lab Result	Assessment	Not relevant	Not relevant	48	100.0
4.8 Points and wires	4.8c	Lab Result	Assessment	Not relevant	Not relevant	48	100.0
4.8 Points and wires	4.8d	Lab Result	Assessment	Not relevant	Not relevant	48	100.0
4.8 Points and wires	4.8e	Lab Result	Assessment	Relevant	Relevant	48	81.3
4.9 Protruding parts	4.9	Lab Result	Assessment	Not relevant	Not relevant	47	95.7
4.10 Parts moving against each other	4.10.1a	Lab Result	Assessment	Not relevant	Not relevant	47	100.0
4.10 Parts moving against each other	4.10.1b	Lab Result	Assessment	Not relevant	Not relevant	47	100.0
4.10 Parts moving against each other	4.10.1c	Lab Result	Assessment	Not relevant	Not relevant	47	100.0
4.10 Parts moving against each other	4.10.1d	Lab Result	Assessment	Not relevant	Not relevant	47	100.0
4.10 Parts moving against each other	4.10.2a	Lab Result	Assessment	Not relevant	Not relevant	47	100.0
4.10 Parts moving against each other	4.10.2b	Lab Result	Assessment	Not relevant	Not relevant	47	100.0
4.10 Parts moving against each other	4.10.2c	Lab Result	Assessment	Not relevant	Not relevant	47	100.0
4.10 Parts moving against each other (cont.)	4.10.3	Lab Result	Assessment	Not relevant	Not relevant	47	100.0
4.10 Parts moving against each other (cont.)	4.10.4a	Lab Result	Assessment	Not relevant	Not relevant	47	100.0
4.10 Parts moving against each other (cont.)	4.10.4b	Lab Result	Assessment	Not relevant	Not relevant	47	100.0
4.10 Parts moving against each other (cont.)	4.10.4c	Lab Result	Assessment	Not relevant	Not relevant	47	100.0
4.11 Mouth actuated toys	4.11a	Lab Result	Assessment	Not relevant	Not relevant	47	100.0
4.11 Mouth actuated toys	4.11b	Lab Result	Assessment	Not relevant	Not relevant	47	100.0
4.11 Mouth actuated toys	4.11c	Lab Result	Assessment	Not relevant	Not relevant	47	100.0
4.11 Mouth actuated toys	4.11d	Lab Result	Assessment	Not relevant	Not relevant	47	100.0

Analyte	Test	Analyst	Method	Result	Assigned Value	No of results	Satisfactory %
4.11 Mouth actuated toys	4.11e	Lab Result	Assessment	Not relevant	Not relevant	47	100.0
4.12 Balloons	4.12	Lab Result	Assessment	Not relevant	Not relevant	47	100.0
4.13 Cords of toy kites and other flying toys	4.13	Lab Result	Assessment	Not relevant	Not relevant	47	100.0
4.14 Enclosures	4.14.1a	Lab Result	Assessment	Not relevant	Not relevant	47	100.0
4.14 Enclosures	4.14.1b	Lab Result	Assessment	Not relevant	Not relevant	47	100.0
4.14 Enclosures	4.14.1c	Lab Result	Assessment	Not relevant	Not relevant	47	100.0
4.14 Enclosures	4.14.2a	Lab Result	Assessment	Not relevant	Not relevant	47	100.0
4.14 Enclosures	4.14.2b	Lab Result	Assessment	Not relevant	Not relevant	47	100.0
4.14 Enclosures	4.14.2c	Lab Result	Assessment	Not relevant	Not relevant	47	100.0
4.15 Toys intended to bear the mass of a child	4.15.1.1	Lab Result	Assessment	Not relevant	Not relevant	47	100.0
4.15 Toys intended to bear the mass of a child	4.15.1.2	Lab Result	Assessment	Not relevant	Not relevant	47	100.0
4.15 Toys intended to bear the mass of a child	4.15.1.3a	Lab Result	Assessment	Not relevant	Not relevant	47	100.0
4.15 Toys intended to bear the mass of a child	4.15.1.3b	Lab Result	Assessment	Not relevant	Not relevant	47	100.0
4.15 Toys intended to bear the mass of a child	4.15.1.3c	Lab Result	Assessment	Not relevant	Not relevant	47	100.0
4.15 Toys intended to bear the mass of a child	4.15.1.3d	Lab Result	Assessment	Not relevant	Not relevant	47	100.0
4.15 Toys intended to bear the mass of a child	4.15.1.4	Lab Result	Assessment	Not relevant	Not relevant	47	100.0
4.15 Toys intended to bear the mass of a child	4.15.1.5a	Lab Result	Assessment	Not relevant	Not relevant	47	100.0
4.15 Toys intended to bear the mass of a child	4.15.1.5b	Lab Result	Assessment	Not relevant	Not relevant	47	100.0
4.15 Toys intended to bear the mass of a child (cont.)	4.15.1.6a	Lab Result	Assessment	Not relevant	Not relevant	47	100.0
4.15 Toys intended to bear the mass of a child (cont.)	4.15.1.6b	Lab Result	Assessment	Not relevant	Not relevant	47	100.0
4.15 Toys intended to bear the mass of a child (cont.)	4.15.1.6c	Lab Result	Assessment	Not relevant	Not relevant	47	100.0
4.15 Toys intended to bear the mass of a child (cont.)	4.15.1.6d	Lab Result	Assessment	Not relevant	Not relevant	47	100.0
4.15 Toys intended to bear the mass of a child (cont.)	4.15.1.7	Lab Result	Assessment	Not relevant	Not relevant	47	100.0
4.15 Toys intended to bear the mass of a child (cont.)	4.15.1.8	Lab Result	Assessment	Not relevant	Not relevant	47	100.0
4.15 Toys intended to bear the mass of a child (cont.)	4.15.2.1	Lab Result	Assessment	Not relevant	Not relevant	47	100.0
4.15 Toys intended to bear the mass of a child (cont.)	4.15.2.2	Lab Result	Assessment	Not relevant	Not relevant	47	100.0

Analyte	Test	Analyst	Method	Result	Assigned Value	No of results	Satisfactory %
4.15 Toys intended to bear the mass of a child (cont.)	4.15.2.3	Lab Result	Assessment	Not relevant	Not relevant	47	100.0
4.15 Toys intended to bear the mass of a child (cont.)	4.15.3a	Lab Result	Assessment	Not relevant	Not relevant	47	100.0
4.15 Toys intended to bear the mass of a child (cont.)	4.15.3b	Lab Result	Assessment	Not relevant	Not relevant	47	100.0
4.15 Toys intended to bear the mass of a child (cont.)	4.15.3c	Lab Result	Assessment	Not relevant	Not relevant	47	100.0
4.15 Toys intended to bear the mass of a child (cont.)	4.15.3d	Lab Result	Assessment	Not relevant	Not relevant	47	100.0
4.15 Toys intended to bear the mass of a child (cont.)	4.15.3e	Lab Result	Assessment	Not relevant	Not relevant	47	100.0
4.15 Toys intended to bear the mass of a child (cont.)	4.15.4a	Lab Result	Assessment	Not relevant	Not relevant	47	100.0
4.15 Toys intended to bear the mass of a child (cont.)	4.15.4b	Lab Result	Assessment	Not relevant	Not relevant	47	100.0
4.15 Toys intended to bear the mass of a child (cont.)	4.15.4c	Lab Result	Assessment	Not relevant	Not relevant	47	100.0
4.15 Toys intended to bear the mass of a child (cont.)	4.15.4d	Lab Result	Assessment	Not relevant	Not relevant	47	100.0
4.15 Toys intended to bear the mass of a child (cont.)	4.15.5.1	Lab Result	Assessment	Not relevant	Not relevant	47	100.0
4.15 Toys intended to bear the mass of a child (cont.)	4.15.5.2	Lab Result	Assessment	Not relevant	Not relevant	47	100.0
4.15 Toys intended to bear the mass of a child (cont.)	4.15.5.3a	Lab Result	Assessment	Not relevant	Not relevant	47	100.0
4.15 Toys intended to bear the mass of a child (cont.)	4.15.5.3b	Lab Result	Assessment	Not relevant	Not relevant	47	100.0
4.15 Toys intended to bear the mass of a child (cont.)	4.15.5.4a	Lab Result	Assessment	Not relevant	Not relevant	47	100.0
4.15 Toys intended to bear the mass of a child (cont.)	4.15.5.4b	Lab Result	Assessment	Not relevant	Not relevant	47	100.0
4.15 Toys intended to bear the mass of a child (cont.)	4.15.5.4c	Lab Result	Assessment	Not relevant	Not relevant	47	100.0
4.15 Toys intended to bear the mass of a child (cont.)	4.15.5.5	Lab Result	Assessment	Not relevant	Not relevant	47	100.0
4.15 Toys intended to bear the mass of a child (cont.)	4.15.5.6	Lab Result	Assessment	Not relevant	Not relevant	47	100.0
4.15 Toys intended to bear the mass of a child (cont.)	4.15.5.7	Lab Result	Assessment	Not relevant	Not relevant	47	100.0
4.16 Heavy immobile toys	4.16	Lab Result	Assessment	Not relevant	Not relevant	47	100.0
4.17 Projectiles	4.17.1a	Lab Result	Assessment	Not relevant	Not relevant	47	100.0
4.17 Projectiles	4.17.1b	Lab Result	Assessment	Not relevant	Not relevant	47	100.0
4.17 Projectiles	4.17.1c	Lab Result	Assessment	Not relevant	Not relevant	47	100.0
4.17 Projectiles	4.17.1d	Lab Result	Assessment	Not relevant	Not relevant	47	100.0

Analyte	Test	Analyst	Method	Result	Assigned Value	No of results	Satisfactory %
4.17 Projectiles	4.17.2	Lab Result	Assessment	Not relevant	Not relevant	47	100.0
4.17 Projectiles	4.17.3a	Lab Result	Assessment	Not relevant	Not relevant	47	100.0
4.17 Projectiles	4.17.3b	Lab Result	Assessment	Not relevant	Not relevant	47	100.0
4.17 Projectiles	4.17.3c	Lab Result	Assessment	Not relevant	Not relevant	47	100.0
4.17 Projectiles (cont.)	4.17.4a	Lab Result	Assessment	Not relevant	Not relevant	47	100.0
4.17 Projectiles (cont.)	4.17.4b	Lab Result	Assessment	Not relevant	Not relevant	47	100.0
4.17 Projectiles (cont.)	4.17.4c	Lab Result	Assessment	Not relevant	Not relevant	47	100.0
4.18 Aquatic toys	4.18a	Lab Result	Assessment	Not relevant	Not relevant	47	100.0
4.18 Aquatic toys	4.18b	Lab Result	Assessment	Not relevant	Not relevant	47	100.0
4.18 Aquatic toys	4.18c	Lab Result	Assessment	Not relevant	Not relevant	47	100.0
4.19 Percussion caps	4.19	Lab Result	Assessment	Not relevant	Not relevant	47	100.0
4.20 Acoustics	4.20a	Lab Result	Assessment	Not relevant	Not relevant	47	100.0
4.20 Acoustics	4.20b	Lab Result	Assessment	Not relevant	Not relevant	47	100.0
4.20 Acoustics	4.20c	Lab Result	Assessment	Not relevant	Not relevant	47	100.0
4.20 Acoustics	4.20d	Lab Result	Assessment	Not relevant	Not relevant	47	100.0
4.20 Acoustics	4.20e	Lab Result	Assessment	Not relevant	Not relevant	47	100.0
4.20 Acoustics	4.20f	Lab Result	Assessment	Not relevant	Not relevant	47	100.0
4.21 Toys containing a heat source	4.21a	Lab Result	Assessment	Not relevant	Not relevant	47	100.0
4.21 Toys containing a heat source	4.21b	Lab Result	Assessment	Not relevant	Not relevant	47	100.0
4.21 Toys containing a heat source	4.21c	Lab Result	Assessment	Not relevant	Not relevant	47	100.0
4.22 Small balls	4.22	Lab Result	Assessment	Not relevant	Not relevant	47	100.0
4.23 Magnets	4.23.1	Lab Result	Assessment	Relevant	Relevant	47	83.0
4.23 Magnets	4.23.2a	Lab Result	Assessment	Relevant	Relevant	47	87.2
4.23 Magnets	4.23.2b	Lab Result	Assessment	Relevant	Relevant	47	91.5
4.23 Magnets	4.23.2c	Lab Result	Assessment	Relevant	Relevant	47	93.6
4.23 Magnets	4.23.3	Lab Result	Assessment	Not relevant	Not relevant	47	95.7
4.24 Yo-yo balls	4.24	Lab Result	Assessment	Not relevant	Not relevant	47	100.0
4.25 Toys attached to food	4.25a	Lab Result	Assessment	Not relevant	Not relevant	47	100.0
4.25 Toys attached to food	4.25b	Lab Result	Assessment	Not relevant	Not relevant	47	100.0
5.1 General requirements	5.1a	Lab Result	Assessment	Relevant	Relevant	48	100.0
5.1 General requirements	5.1b	Lab Result	Assessment	Relevant	Relevant	48	95.8
5.1 General requirements	5.1c	Lab Result	Assessment	Not relevant	Not relevant	48	100.0
5.1 General requirements	5.1d	Lab Result	Assessment	Not relevant	Not relevant	48	100.0
5.1 General requirements	5.1e	Lab Result	Assessment	Relevant	Relevant	48	70.8
5.1 General requirements	5.1f	Lab Result	Assessment	Not relevant	Not relevant	48	95.8
5.1 General requirements	5.1g	Lab Result	Assessment	Not relevant	Not relevant	48	97.9
5.2 Soft filled toys and soft filled parts of toy	5.2a	Lab Result	Assessment	Not relevant	Not relevant	47	100.0
5.2 Soft filled toys and soft filled parts of toy	5.2b	Lab Result	Assessment	Not relevant	Not relevant	47	100.0
5.2 Soft filled toys and soft filled parts of toy	5.2c	Lab Result	Assessment	Not relevant	Not relevant	47	100.0

Analyte	Test	Analyst	Method	Result	Assigned Value	No of results	Satisfactory %
5.3 Plastic sheeting	5.3	Lab Result	Assessment	Not relevant	Not relevant	46	100.0
5.4 Cords on toys	5.4a	Lab Result	Assessment	Not relevant	Not relevant	47	100.0
5.4 Cords on toys	5.4b	Lab Result	Assessment	Not relevant	Not relevant	47	97.9
5.4 Cords on toys	5.4c	Lab Result	Assessment	Not relevant	Not relevant	47	100.0
5.4 Cords on toys	5.4d	Lab Result	Assessment	Not relevant	Not relevant	47	100.0
5.4 Cords on toys	5.4e	Lab Result	Assessment	Not relevant	Not relevant	47	100.0
5.4 Cords on toys	5.4f	Lab Result	Assessment	Not relevant	Not relevant	47	100.0
5.4 Cords on toys	5.4g	Lab Result	Assessment	Not relevant	Not relevant	47	100.0
5.4 Cords on toys	5.4h	Lab Result	Assessment	Not relevant	Not relevant	47	100.0
5.4 Cords on toys	5.4i	Lab Result	Assessment	Not relevant	Not relevant	47	100.0
5.5 Liquid filled toys	5.5	Lab Result	Assessment	Not relevant	Not relevant	47	100.0
5.6 Speed limitation on electrically driven toys	5.6	Lab Result	Assessment	Not relevant	Not relevant	47	100.0
5.7 Glass and porcelain	5.7	Lab Result	Assessment	Not relevant	Not relevant	47	100.0
5.8 Shape and size of certain toys	5.8a	Lab Result	Assessment	Not relevant	Not relevant	47	91.5
5.8 Shape and size of certain toys	5.8b	Lab Result	Assessment	Not relevant	Not relevant	47	91.5
5.9 Toys comprising monofilament fibres	5.9	Lab Result	Assessment	Not relevant	Not relevant	47	100.0
5.10 Small balls	5.10a	Lab Result	Assessment	Not relevant	Not relevant	47	100.0
5.10 Small balls	5.10b	Lab Result	Assessment	Not relevant	Not relevant	47	100.0
5.11 Play figures	5.11a	Lab Result	Assessment	Not relevant	Not relevant	47	91.5
5.11 Play figures	5.11b	Lab Result	Assessment	Not relevant	Not relevant	47	93.6
5.12 Hemispherical shaped toys	5.12a	Lab Result	Assessment	Not relevant	Not relevant	47	100.0
5.12 Hemispherical shaped toys	5.12b	Lab Result	Assessment	Not relevant	Not relevant	47	100.0
5.12 Hemispherical shaped toys	5.12c	Lab Result	Assessment	Not relevant	Not relevant	47	100.0
5.12 Hemispherical shaped toys	5.12d	Lab Result	Assessment	Not relevant	Not relevant	47	100.0
5.13 Suction cups	5.13a	Lab Result	Assessment	Not relevant	Not relevant	47	100.0
5.13 Suction cups	5.13b	Lab Result	Assessment	Not relevant	Not relevant	47	100.0
5.14 Straps intended to be worn around the neck	5.14	Lab Result	Assessment	Not relevant	Not relevant	47	100.0
6 Packaging	6a	Lab Result	Assessment	Not relevant	Not relevant	47	100.0
6 Packaging	6b	Lab Result	Assessment	Not relevant	Not relevant	47	100.0
6 Packaging	6c	Lab Result	Assessment	Not relevant	Not relevant	47	100.0
6 Packaging	6d	Lab Result	Assessment	Not relevant	Not relevant	47	100.0
6 Packaging	6e	Lab Result	Assessment	Not relevant	Not relevant	47	100.0

3R - EN71-3 Real material

Analyte	Analyst	Method	Result	Units	z score (** z' score)	Assigned Value	Uncertainty	SDPA	No of results	Median	Mean	Robust SD	SD
Antimony (uncorrected)	Lab Result	ICP-OES	9.78	mg/kg	-0.28	10.66	0.23	3.198	40	10.90	11.07	1.416	2.498

Analyte	Analyst	Method	Result	Units	z score (** z' score)	Assigned Value	Uncertainty	SDPA	No of results	Median	Mean	Robust SD	SD
Arsenic (uncorrected)	Lab Result	ICP-OES	178.19	mg/kg	0.19	168.40	2.53	50.520	41	172.00	176.44	14.889	30.639
Barium (uncorrected)	Lab Result	ICP-OES	118.45	mg/kg	-0.82	135.14	2.67	20.271	42	136.51	138.33	15.445	29.890
Cadmium (uncorrected)	Lab Result	ICP-OES	59.21	mg/kg	0.14	58.00	0.85	8.700	41	57.60	58.54	4.160	5.530
Chromium (uncorrected)	Lab Result	ICP-OES	64.42	mg/kg	0.36	61.08	0.69	9.162	42	61.06	62.66	3.915	6.010
Lead (uncorrected)	Lab Result	ICP-OES	<5.00	mg/kg		N/A	N/A	N/A	40	N/A	N/A	N/A	N/A
Mercury (uncorrected)	Lab Result	ICP-OES	<5.00	mg/kg		N/A	N/A	N/A	40	N/A	N/A	N/A	N/A
Selenium (uncorrected)	Lab Result	ICP-OES	<5.00	mg/kg		N/A	N/A	N/A	39	N/A	N/A	N/A	N/A
Aluminium	Lab Result	ICP-OES	780.54	mg/kg	-0.70	856.00	17.46	107.310	39	873.50	857.94	86.236	124.929
Boron	Lab Result	ICP-OES	13.26	mg/kg	0.15	12.83	0.59	2.892	38	12.80	14.01	2.669	4.620
Cobalt	Lab Result	ICP-OES	<5.00	mg/kg		N/A	N/A	N/A	36	N/A	N/A	N/A	N/A
Copper	Lab Result	ICP-OES	<5.00	mg/kg		N/A	N/A	N/A	38	N/A	N/A	N/A	N/A
Manganese	Lab Result	ICP-OES	<5.00	mg/kg		N/A	N/A	N/A	38	N/A	N/A	N/A	N/A
Nickel	Lab Result	ICP-OES	156.95	mg/kg	0.15	155.00	2.15	13.347	38	155.00	152.16	13.347	13.795
Strontium	Lab Result	ICP-OES	69.99	mg/kg	-0.44	73.10	1.15	6.992	36	73.40	72.76	8.275	8.430
Tin	Lab Result	ICP-OES	29.80	mg/kg	-0.45	31.27	0.55	3.263	38	30.78	31.08	2.907	4.040
Zinc	Lab Result	ICP-OES	507.24	mg/kg	-0.12	513.14	7.78	48.198	38	524.47	525.22	42.955	52.331

3S - EN71-3 Standard solution

Analyte	Analyst	Method	Result	Units	z score (** z' score)	Assigned Value	Uncertainty	SDPA	No of results	Median	Mean	Robust SD	SD
Antimony (uncorrected)	Lab Result	ICP-OES	0.34	mg/L	0.00	0.34	0.00	0.034	41	0.36	0.36	0.030	0.036
Arsenic (uncorrected)	Lab Result	ICP-OES	0.43	mg/L	-0.23	0.44	0.00	0.044	41	0.45	0.46	0.030	0.043
Barium (uncorrected)	Lab Result	ICP-OES	4.80	mg/L	-0.77	5.20	0.03	0.520	42	5.04	5.00	0.141	0.242
Cadmium (uncorrected)	Lab Result	ICP-OES	0.75	mg/L	-0.38	0.78	0.00	0.078	41	0.78	0.78	0.030	0.033
Chromium (uncorrected)	Lab Result	ICP-OES	1.26	mg/L	-0.45	1.32	0.01	0.132	42	1.32	1.32	0.030	0.052
Lead (uncorrected)	Lab Result	ICP-OES	0.57	mg/L	-0.50	0.60	0.00	0.060	41	0.59	0.59	0.022	0.030
Mercury (uncorrected)	Lab Result	ICP-OES	0.19	mg/L	-0.50	0.20	0.00	0.020	41	0.19	0.20	0.015	0.022
Selenium (uncorrected)	Lab Result	ICP-OES	4.22	mg/L	-0.45	4.42	0.02	0.442	42	4.37	4.46	0.237	0.385
Aluminium	Lab Result	ICP-OES	1.07	mg/L	-0.27	1.10	0.00	0.110	40	1.05	1.05	0.044	0.049
Boron	Lab Result	ICP-OES	0.52	mg/L	0.40	0.50	0.00	0.050	41	0.50	0.49	0.030	0.036
Cobalt	Lab Result	ICP-OES	0.21	mg/L	-0.45	0.22	0.00	0.022	38	0.21	0.22	0.015	0.012
Copper	Lab Result	ICP-OES	0.30	mg/L	0.00	0.30	0.00	0.030	40	0.30	0.30	0.015	0.019
Manganese	Lab Result	ICP-OES	0.32	mg/L	-0.59	0.34	0.00	0.034	39	0.34	0.33	0.015	0.014
Nickel	Lab Result	ICP-OES	1.73	mg/L	-0.44	1.81	0.01	0.181	39	1.77	1.77	0.059	0.088
Strontium	Lab Result	ICP-OES	0.25	mg/L	-0.38	0.26	0.00	0.026	38	0.26	0.26	0.015	0.014
Tin	Lab Result	ICP-OES	1.12	mg/L	-0.26	1.15	0.00	0.115	38	1.14	1.15	0.059	0.066
Zinc	Lab Result	ICP-OES	0.25	mg/L	0.00	0.25	0.00	0.025	39	0.26	0.26	0.015	0.019

** Please note, participant performance for this analyte has been assessed using a z' score, rather than a z score, in order to account for the measurement uncertainty of the assigned value which is not negligible when compared to the SDPA.