

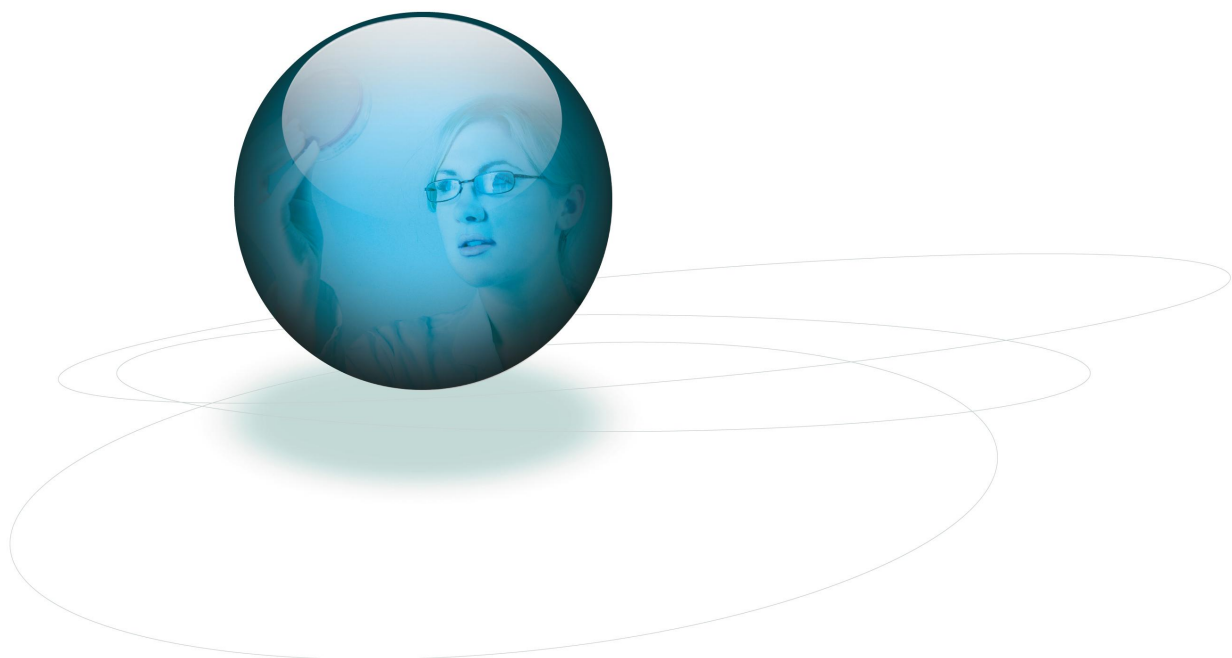
TOYTEST - Toy Safety Analytes Proficiency Scheme

TY0186 - Heshan Leo Metrology and Individual Report

Round: 53

Issue Number 1

Issued 26 March 2013



LGC Standards Proficiency Testing

1 Chamberhall Business Park, Chamberhall Green, Bury BL9 0AP, UK

Telephone: +44 (0) 161 762 2500 Fax: +44 (0) 161 762 2501

Email: customerservices@lgcpt.com Website: www.lgcpt.com



0001

Individual Report

This individual report contains a summary of all the results submitted and the performance assessments for your laboratory and your individual analysts. Please note that nominated laboratory results are represented by a blue highlight in the analyst box.

Data statistics given in the individual report are for the method you have used for each analyte. Further detail can be obtained from the main report.

Full details of the scheme, sample types, analytes and data analysis can be found in the corresponding Main Report, along with any technical comments, if applicable. The Main Report is the definitive version.

If you have any questions regarding your results which are not answered in the Main Report, please contact us using the details on the front of the report. If you would like to order any samples for re-test, please contact our customer service department or your local office.

Results Summary

Sample	Results Reported	Satisfactory Results	Questionable Results	Unsatisfactory Results	Not Assessed [^]
3R - EN71-3 Real material*	17	9	0	0	8
3S - EN71-3 Standard solution	17	17	0	0	0
Round Total	34	26	0	0	8

* Analyte(s) in this round have colour coding suspended. Refer to the main report(s) for further details.

You can identify which analyte(s) apply to you on the following pages (performance scores that have no colour coding identify where suspensions have occurred.)

[^] Results which are Not Assessed should be reviewed by comparing them with the assigned value and other relevant statistics given in the main report. Participants, according to their internal quality criteria, may consider Not Assessed results to be satisfactory, questionable or unsatisfactory. Further information regarding why results may not be assessed is given in the Scheme Information section of the main report.

No unsatisfactory results in this round

No questionable results in this round

3R - EN71-3 Real material

Analyte	Analyst	Method	Result	Units	z score (** z' score)	Assigned Value	Uncertainty	SDPA	No of results	Median	Mean	Robust SD	SD
Antimony (uncorrected)	Lab Result	ICP-OES	35.10	mg/kg	-0.08	36.00	0.87	10.800	36	35.17	36.13	5.428	7.604
Arsenic (uncorrected)	Lab Result	ICP-OES	34.60	mg/kg	-0.20	36.80	0.48	11.040	37	36.80	35.54	2.669	5.239
Barium (uncorrected)	Lab Result	ICP-OES	<5.00	mg/kg		N/A	N/A	N/A	35	N/A	N/A	N/A	N/A
Cadmium (uncorrected)	Lab Result	ICP-OES	<5.00	mg/kg		N/A	N/A	N/A	35	N/A	N/A	N/A	N/A
Chromium (uncorrected)	Lab Result	ICP-OES	127.40	mg/kg	-0.57	139.29	1.78	20.893	36	139.09	134.11	8.327	16.330
Lead (uncorrected)	Lab Result	ICP-OES	112.90	mg/kg	-0.38	119.72	1.39	17.957	37	119.02	115.91	7.979	13.978
Mercury (uncorrected)	Lab Result	ICP-OES	31.10	mg/kg	-0.34	34.00	0.81	8.500	35	34.50	33.99	4.219	9.011
Selenium (uncorrected)	Lab Result	ICP-OES	<5.00	mg/kg		N/A	N/A	N/A	35	N/A	N/A	N/A	N/A
Aluminium	Lab Result	ICP-OES	26.60	mg/kg		N/A	N/A	N/A	26	N/A	N/A	N/A	N/A
Boron	Lab Result	ICP-OES	148.40	mg/kg	0.37	137.84	5.81	28.637	27	136.55	141.84	17.766	47.847
Cobalt	Lab Result	ICP-OES	48.80	mg/kg	-0.37	50.30	0.83	4.078	26	50.60	49.50	4.671	5.092
Copper	Lab Result	ICP-OES	<5.00	mg/kg		N/A	N/A	N/A	27	N/A	N/A	N/A	N/A
Manganese	Lab Result	ICP-OES	<5.00	mg/kg		N/A	N/A	N/A	26	N/A	N/A	N/A	N/A
Nickel	Lab Result	ICP-OES	187.40	mg/kg	0.02	184.30	28.87	142.368	27	184.30	192.59	140.752	115.751
Strontium	Lab Result	ICP-OES	<5.00	mg/kg		N/A	N/A	N/A	26	N/A	N/A	N/A	N/A
Tin	Lab Result	ICP-OES	<5.00	mg/kg		N/A	N/A	N/A	24	N/A	N/A	N/A	N/A
Zinc	Lab Result	ICP-OES	86.70	mg/kg	1.79	69.06	2.00	9.855	27	71.38	70.73	8.498	14.220

3S - EN71-3 Standard solution

Analyte	Analyst	Method	Result	Units	z score (** z' score)	Assigned Value	Uncertainty	SDPA	No of results	Median	Mean	Robust SD	SD
Antimony (uncorrected)	Lab Result	ICP-OES	0.83	mg/L	0.37	0.80	0.00	0.080	36	0.82	0.82	0.030	0.052
Arsenic (uncorrected)	Lab Result	ICP-OES	0.42	mg/L	0.00	0.42	0.00	0.042	36	0.42	0.42	0.030	0.051
Barium (uncorrected)	Lab Result	ICP-OES	2.72	mg/L	-0.35	2.82	0.01	0.282	36	2.74	2.76	0.089	0.098
Cadmium (uncorrected)	Lab Result	ICP-OES	1.69	mg/L	0.18	1.66	0.00	0.166	36	1.62	1.62	0.044	0.055
Chromium (uncorrected)	Lab Result	ICP-OES	1.68	mg/L	-0.45	1.76	0.01	0.176	35	1.73	1.71	0.067	0.076
Lead (uncorrected)	Lab Result	ICP-OES	1.26	mg/L	-0.31	1.30	0.00	0.130	36	1.26	1.28	0.044	0.093
Mercury (uncorrected)	Lab Result	ICP-OES	0.29	mg/L	-0.33	0.30	0.00	0.030	34	0.30	0.31	0.015	0.023
Selenium (uncorrected)	Lab Result	ICP-OES	0.94	mg/L	0.44	0.90	0.00	0.090	36	0.90	0.90	0.030	0.059
Aluminium	Lab Result	ICP-OES	1.22	mg/L	-0.69	1.31	0.00	0.131	27	1.25	1.26	0.044	0.127
Boron	Lab Result	ICP-OES	0.46	mg/L	0.95	0.42	0.01	0.042	27	0.42	0.42	0.015	0.050
Cobalt	Lab Result	ICP-OES	0.29	mg/L	0.36	0.28	0.00	0.028	27	0.28	0.28	0.015	0.008
Copper	Lab Result	ICP-OES	0.89	mg/L	-0.11	0.90	0.00	0.090	27	0.89	0.89	0.030	0.032
Manganese	Lab Result	ICP-OES	0.37	mg/L	0.88	0.34	0.00	0.034	27	0.36	0.36	0.015	0.015
Nickel	Lab Result	ICP-OES	1.53	mg/L	0.20	1.50	0.00	0.150	27	1.48	1.48	0.030	0.058
Strontium	Lab Result	ICP-OES	0.30	mg/L	-0.32	0.31	0.00	0.031	27	0.31	0.31	0.015	0.013
Tin	Lab Result	ICP-OES	0.65	mg/L	0.00	0.65	0.00	0.065	24	0.68	0.72	0.030	0.090

Analyte	Analyst	Method	Result	Units	z score (** z' score)	Assigned Value	Uncertainty	SDPA	No of results	Median	Mean	Robust SD	SD
Zinc	Lab Result	ICP-OES	0.58	mg/L	0.55	0.55	0.00	0.055	27	0.54	0.54	0.030	0.027

** Please note, participant performance for this analyte has been assessed using a z' score, rather than a z score, in order to account for the measurement uncertainty of the assigned value which is not negligible when compared to the SDPA.